

Coaxial Frequency Mixer

ZLW-11+

Level 7 (LO Power +7 dBm) 5 to 2000 MHz



HT-Series
Tight Spot
SMA Wrench
From \$24.95

Maximum Ratings

Operating Temperature	-55°C to 100°C
Storage Temperature	-55°C to 100°C
RF Power	50mW
IF Current	40mA

Permanent damage may occur if any of these limits are exceeded.

Coaxial Connections

LO	1
RF	3
IF	2

Features

- low conversion loss, 6.85 dB typ.
- good L-R isolation, 35 dB typ., L-I, 30 dB typ.
- wideband, 5 to 2000 MHz
- rugged shielded case

Applications

- VHF/UHF
- cellular
- GPS
- satellite distribution
- instrumentation

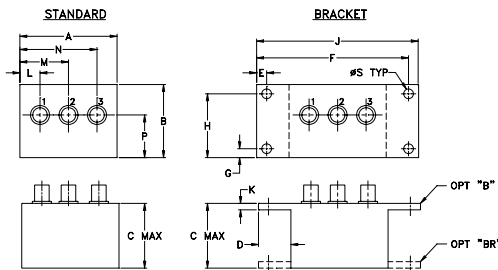
CASE STYLE: M21

Connectors	Model
SMA	ZLW-11+
BRACKET (OPTION "B")	
BRACKET (OPTION "BR")	

+RoHS Compliant

The +Suffix identifies RoHS Compliance. See our web site for RoHS Compliance methodologies and qualifications

Outline Drawing



Outline Dimensions (inch/mm)

A	B	C	D	E	F	G	H
1.50	1.13	1.00	.50	.155	2.345	.138	.987
38.10	28.70	25.40	12.70	3.94	59.56	3.51	25.07

J	K	L	M	N	P	S	wt
2.50	.10	.31	.75	1.19	.66	.150	grams
63.50	2.54	7.87	19.05	30.23	16.76	3.81	40.0

Electrical Specifications

FREQUENCY (MHz)	CONVERSION LOSS (dB)	LO-RF ISOLATION (dB)			LO-IF ISOLATION (dB)		
		L	M	U	L	M	U
5-2000	6.85	50	35	30	45	30	25

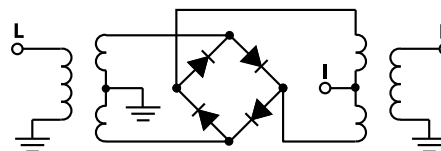
1 dB COMP.: +1 dBm typ.

L = low range [f_L to $10 f_L$] M = mid range [$10 f_L$ to $f_U/2$] U = upper range [$f_U/2$ to f_U]
m = mid band [$2f_L$ to $f_U/2$]

Typical Performance Data

Frequency (MHz)	Conversion Loss (dB)	Isolation L-R (dB)	Isolation L-I (dB)	VSWR RF Port (:1)	VSWR LO Port (:1)
5.00	35.00	5.85	46.19	3.19	3.03
10.00	40.00	5.88	46.23	>67.00	2.54
20.00	50.00	6.11	46.26	>67.00	2.45
50.00	80.00	6.37	45.89	>67.00	2.62
100.00	70.00	6.25	44.70	64.66	2.96
200.00	170.00	6.62	41.17	55.90	3.21
311.92	281.92	6.71	38.72	50.11	3.31
465.39	435.39	7.06	37.94	46.15	3.42
618.85	588.85	7.40	38.38	45.38	3.19
772.31	742.31	7.53	38.07	45.67	2.96
849.04	819.04	7.22	37.13	43.78	2.41
1000.00	970.00	7.05	36.28	38.27	2.10
1156.00	1126.00	6.76	35.18	43.23	1.86
1386.20	1356.20	7.53	41.65	38.52	2.12
1462.90	1432.90	7.62	41.43	41.57	2.27
1500.00	1470.00	7.48	41.94	42.71	2.19
1616.40	1586.40	6.96	43.41	43.97	2.08
1800.20	1770.00	6.79	41.03	38.23	1.87
1923.30	1893.30	6.64	38.49	30.27	1.79
2000.00	1970.00	6.69	39.35	27.98	1.67

Electrical Schematic



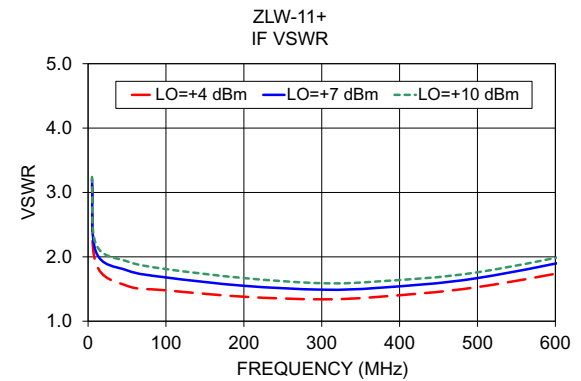
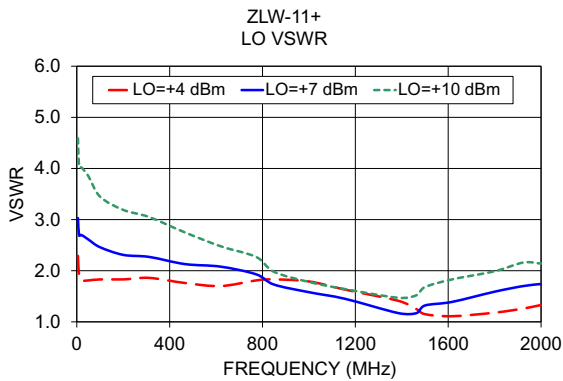
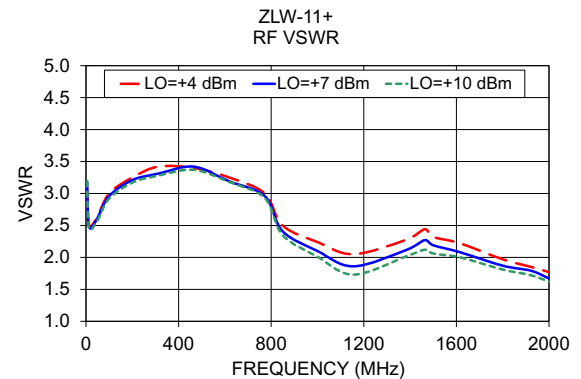
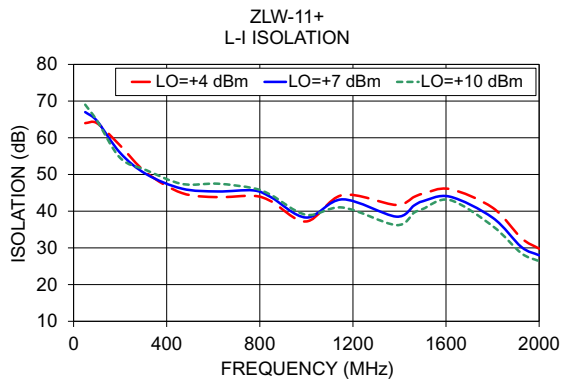
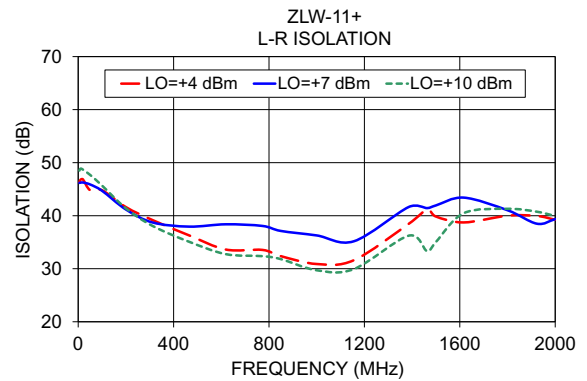
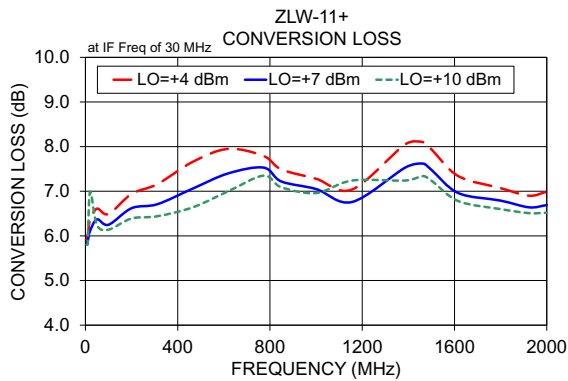
Notes

- Performance and quality attributes and conditions not expressly stated in this specification document are intended to be excluded and do not form a part of this specification document.
- Electrical specifications and performance data contained in this specification document are based on Mini-Circuit's applicable established test performance criteria and measurement instructions.
- The parts covered by this specification document are subject to Mini-Circuits standard limited warranty and terms and conditions (collectively, "Standard Terms"); Purchasers of this part are entitled to the rights and benefits contained therein. For a full statement of the Standard Terms and the exclusive rights and remedies thereunder, please visit Mini-Circuits' website at www.minicircuits.com/WCLStore/terms.jsp



www.minicircuits.com P.O. Box 350166, Brooklyn, NY 11235-0003 (718) 934-4500 sales@minicircuits.com

REV. B
M153690
ZLW-11
DJ/TD/CP/AM
151211



Notes

- A. Performance and quality attributes and conditions not expressly stated in this specification document are intended to be excluded and do not form a part of this specification document.
- B. Electrical specifications and performance data contained in this specification document are based on Mini-Circuit's applicable established test performance criteria and measurement instructions.
- C. The parts covered by this specification document are subject to Mini-Circuits standard limited warranty and terms and conditions (collectively, "Standard Terms"); Purchasers of this part are entitled to the rights and benefits contained therein. For a full statement of the Standard Terms and the exclusive rights and remedies thereunder, please visit Mini-Circuits' website at www.minicircuits.com/MCLStore/terms.jsp

